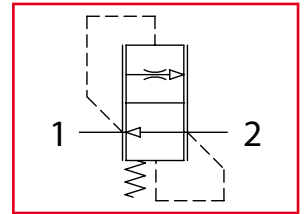




VSC120

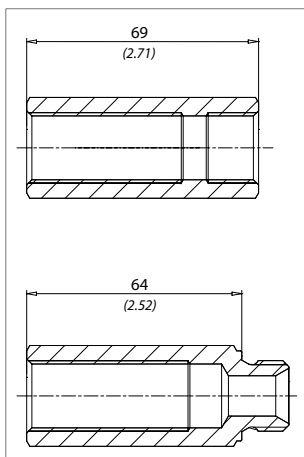
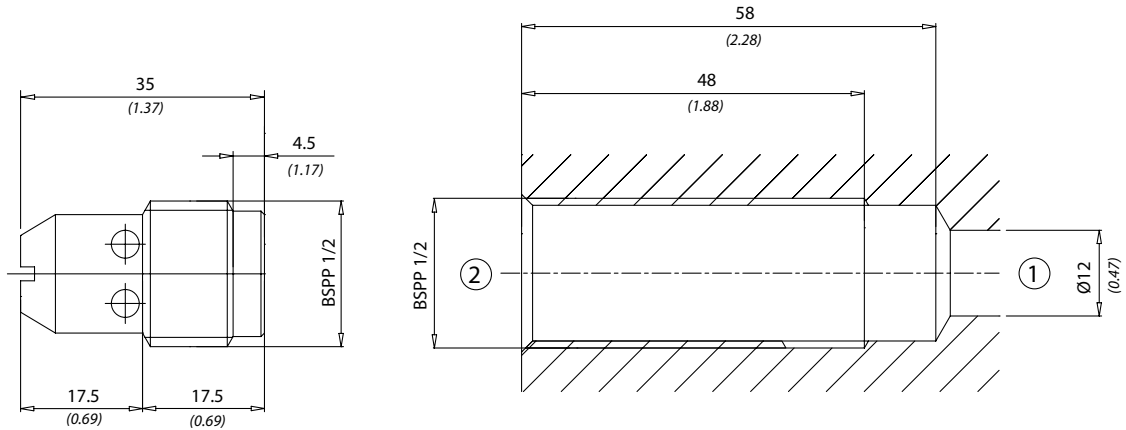
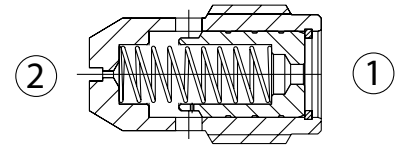
Valvole controllo discesa compensate fisse
Fixed compensated load control valves



LEHENGOMK, S. A.



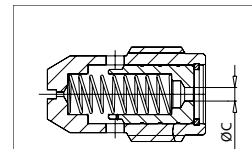
Dati tecnici Technical data	
Viscosità fluido Fluid viscosity	10-500 mm ² /s 45 to 2000 ssu (6 to 420 cSt)
Classe di contaminazione Filtration	ISO code 16/13 SAE class 4 or better
Temperatura fluido Fluid temperature	-20°C +80°C -4°F +176°F
Temperatura ambiente Ambient temperature	-20°C +50°C -4°F +122°F



Codice / Code
61100163

Codice / Code
61100033

mm
(Inches)



Codice Code	Ø C
VSC1209	Ø 2,5 (Ø 0.098)
VSC12012	Ø 3 (Ø 0.118)
VSC12017	Ø 3,5 (Ø 0.137)
VSC12021	Ø 4 (Ø 0.157)
VSC12027	Ø 4,5 (Ø 0.177)
VSC12032	Ø 5 (Ø 0.196)
VSC12040	Ø 5,5 (Ø 0.216)
VSC12047	Ø 6 (Ø 0.236)

Codice ordinazione Ordering code	
VSC120 - Y	
Y	Portata controllata a 100 bar ± 10% Controlled flow at 100 bar ± 10%
9	9 l/min (2.25 USgpm)
12	12 l/min (3 USgpm)
17	17 l/min (4.5 USgpm)
21	21 l/min (5.5 USgpm)
27	27 l/min (7 USgpm)
32	32 l/min (8.5 USgpm)
40	40 l/min (10.5 USgpm)
47	47 l/min (12.5 USgpm)

Caratteristiche tecniche Technical performances				
Codice Code	Portata Max Max flow l/min - USgpm	Pressione Max Max pressure bar/PSI	Peso approssimativo Approx weight Kg / lb	Coppia di serraggio (Nm) Tightening torque (lbt ft)
VSC120	47 (12)	210 (3000)	0,048 (0.1)	10 (7.5)